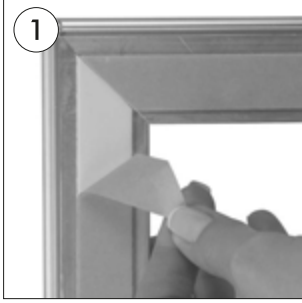
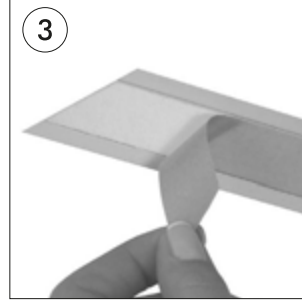
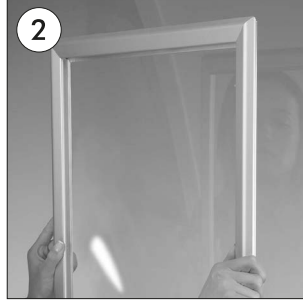


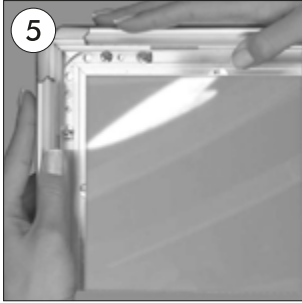
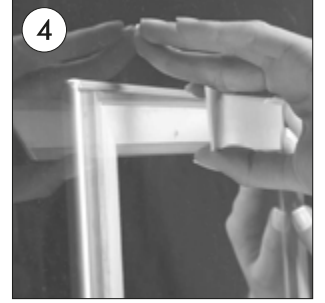
# WINDOW FRAME 32 MM



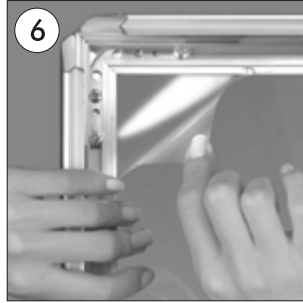
- Take off the yellow protection of the double sided tape along the sides of the frame and post it on the window.
- Kleben Sie den Rahmen mit dem dahinter befindlichen doppelseitigen Band an das Fensterglas.
- Çerçeveyi, arkasındaki çift taraflı bantı açarak cama yapıştırın.



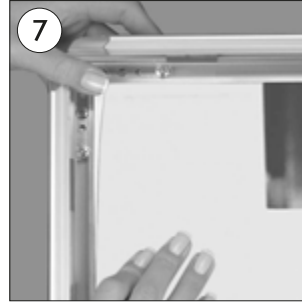
- Take off the yellow protection of the double sided tape along the decorative backing profiles. Post these bars on the other side of the window.
- En fernen Sie die Schutzfolie am Klebeband der anderen 4 Con-trParofilen. Kleben Sie diese Contra- Profile von der Gegenseite des Fensterglases kantengleich mit dem Rahmen.
- Diğer 4 profildeki çift taraflı bantı açın. Profilleri camın diğer tarafından çerçeve kenarlarına eşleştirerek yapıştırın



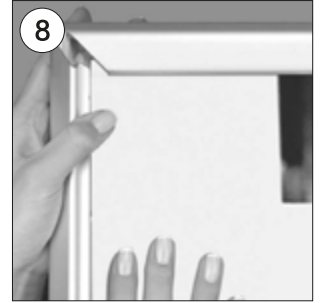
- Open all profiles.
- Alle Profile in der Pfeilrichtung öffnen.
- Kenar profilleri açın.



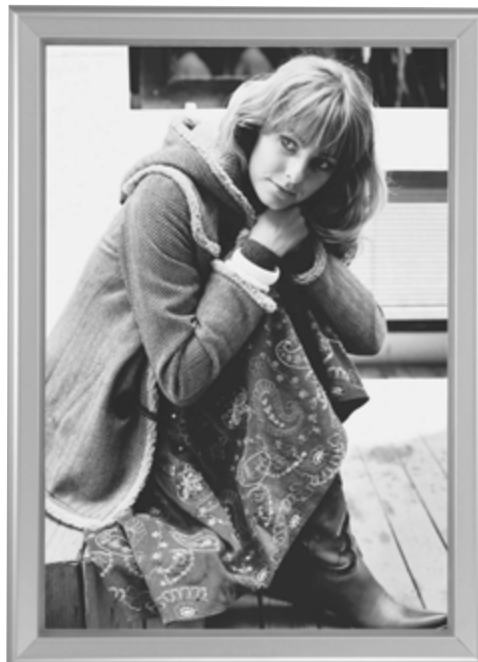
- Take-off the anti-reflex cover.
- Antireflex -Schutzfolie abheben.
- Anti-reflex korumayı kaldırın.



- Place in the poster.
- Poster einlegen.
- Posteri yerleştirin.



- After placing the cover back on the poster, close the profiles.
- Antireflex-Schutzfolie auf Poster legen und die Seitenprofile in Pfeilrichtung zuklappen.
- Anti-reflex korumayı posterin üzerine yerleştirerek kenar profilleri kapatın.



## CAUTION/VORSICHT:

- For the best application of adhesive tape to window, the applied surface must be dry, clean & flat.
- Um das beste Ergebnis der Klebung am Fenster zu erzielen, achten Sie bitte auf die Trockenheit und Sauberkeit der angewandten Fläche
- Çift taraflı bant uygulamasında en iyi sonuç kuru, temiz ve düz alanlarda alınabilir.

- Please inform the order number on the product or on the carton (e.g. 1/110001394-460) to the place that you have made the purchase if any problem with the product occurs.
- Bitte teilen Sie bei jeglichen Problemen, die auf dem Artikel oder auf der Verpackung aufgeführte Auftragsnummer (z.B: 1/110001394-460) Ihrem Händler mit.
- Lüften üründeki herhangi bir sorun için ürünün veya paketin üzerindeki sipariş numarasını (örnek: 1/110001394-460) satın aldığımız yere bildiriniz.
- All rights reserved. All pictures, figures and writings are secured internationally by copy-right law. Infringements will be sued by civil and legal law.
- Alle Rechte vorbehalten. Alle Bilder, Zeichnungen und Texte sind international urheberrechtlich geschützt. Etwaige Zuwiderhandlungen werden zivil-und strafrechtlich verfolgt.
- Tüm hakları saklıdır. Tüm resimlerin, şemaların ve yazıların kopya hakları uluslararası kanunlarla güvence altına alınmıştır. İhlali durumunda sivil ve hukuki yasa mercii tarafından dava edilecektir.



1001859